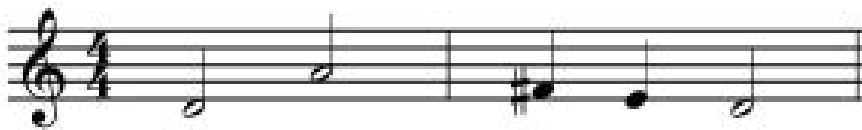


SCACDA AUDITION PROCEDURE

Part I: Melody Echo Patterns

a) Teacher sings or plays on the piano each of the following melodic examples. (#1 through #4) Do not sing and play. After each example is played or sung the student echoes (a cappella) using the syllable “loo”.

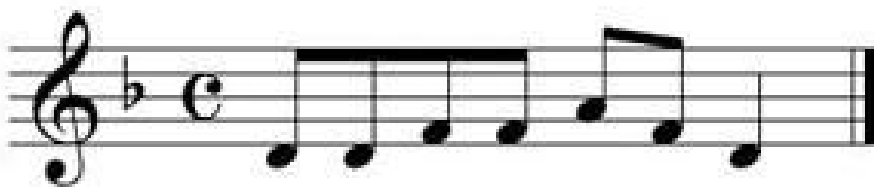
Echo 1



Echo 2



Echo 3



Echo 4



Part II: Prepared Song

- Student sings America a cappella in G major.
- Give the student the starting pitch G. Do not play any other type of introduction.
- The student should sing the vocal line as written. Do not alter the rhythm or the pitches.
- The teacher may accompany the first two measures. The student should complete the song a cappella. The song must be sung straight through without stopping.

America, My Country 'tis of Thee

Soprano

5 My coun - try 'tis of thee, Sweet land of lib - er - ty,
10 Of thee I sing. Land where my fa - thers died, Land of the
Pil-grim's pride, From ev' - ry moun-tain-side, Let free-dom ring!

The image shows a musical score for the Soprano part of the song 'America, My Country 'tis of Thee'. The score is written on three staves of music. The first staff starts with a treble clef, a key signature of one sharp (F#), and a 3/4 time signature. The melody begins with a G4 note. The lyrics are: 'My coun - try 'tis of thee, Sweet land of lib - er - ty, Of thee I sing. Land where my fa - thers died, Land of the Pil-grim's pride, From ev' - ry moun-tain-side, Let free-dom ring!'. The score includes measure numbers 5 and 10. The piece ends with a double bar line.